

Venus®

Product Information

ONE FOR THE BASICS

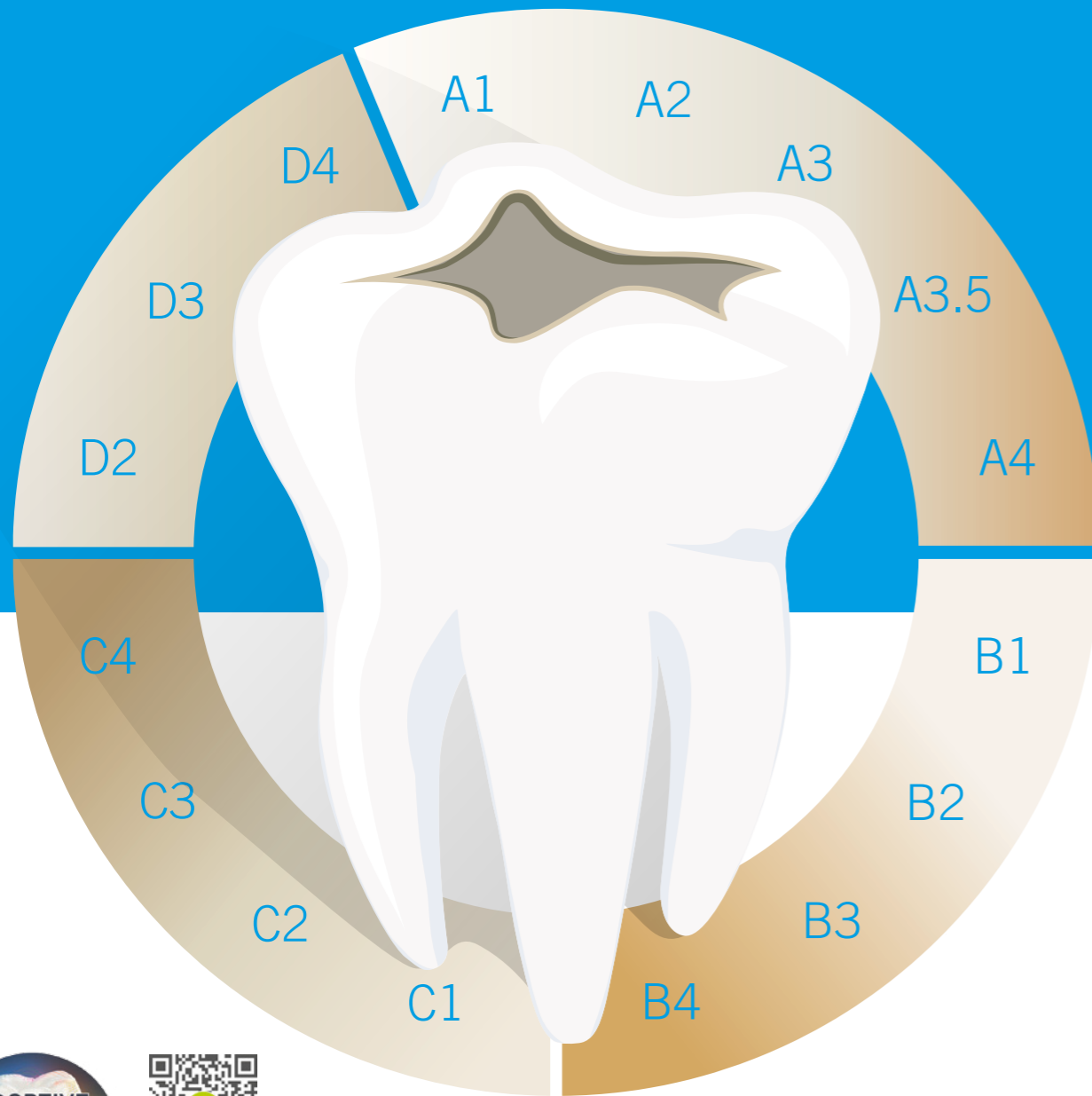


kulzer.com/try-one



KULZER
MITSUI CHEMICALS GROUP

ONE SHADE FOR ALL



ALWAYS GRAB THE RIGHT SHADE FOR YOUR EVERYDAY CASES.

Venus Diamond/Venus Pearl ONE Shade blends seamlessly into the surrounding dentition, independent of the tooth shade, enabling restorations to simply disappear.

The universal composites for everyday restorations offer a new one-shade solution within the Venus family for the majority of everyday cases.

ONE SHADE FOR ALL – THANKS TO THE AMAZING ADAPTIVE LIGHT MATCHING:

Venus Diamond/Venus Pearl ONE Shade determines the shade of the restoration by absorbing the lightwaves that are reflected by the surrounding tooth shade.



Occlusal cavities in different shaded artificial teeth filled with Venus Diamond/Venus Pearl ONE Shade.



"The One Solution"

Start Video: kulzer.com/one-effect

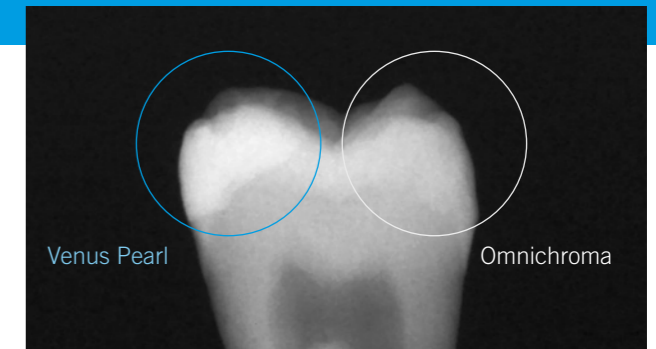
ONE EFFICIENT HANDLING

EVERYDAY RESTORATIONS HAVE NEVER BEEN MORE CONVENIENT.

The handling is as easy as the well-established handling of Venus Diamond and Venus Pearl that has been confirmed by numerous awards, such as e. g. from Reality or The Dental Advisor.

The Venus Diamond and Venus Pearl highlights for easy handling:

- Non-slump qualities for easy carving and sculpting
- Stable, minimally adhesive, with an extended working time
- Choose your preferred consistency:
 - the firm, low-stick consistency of Venus Diamond or
 - the creamy, low-stick consistency of Venus Pearl.



Venus Diamond/Venus Pearl ONE Shade also has a high radiopacity ensuring a reliable diagnosis. Source: Kulzer GmbH, SCA, Germany



Excavated cavity with pulp capping. Case by: Prof. C.-P. Ernst, Mediplus Mainz, Germany



The restoration matches perfectly into the tooth structure as well as to both neighboring teeth.

ONE RELIABLE SOLUTION



"My go-to composite is Venus Pearl. I see far less chipping or fracture than with other composites I've used. With the new ONE shade I can rely on the experienced TCD-chemistry."

Dr. Edoardo Fossati,
Turin, Italy

FREE
of BPA related
monomers



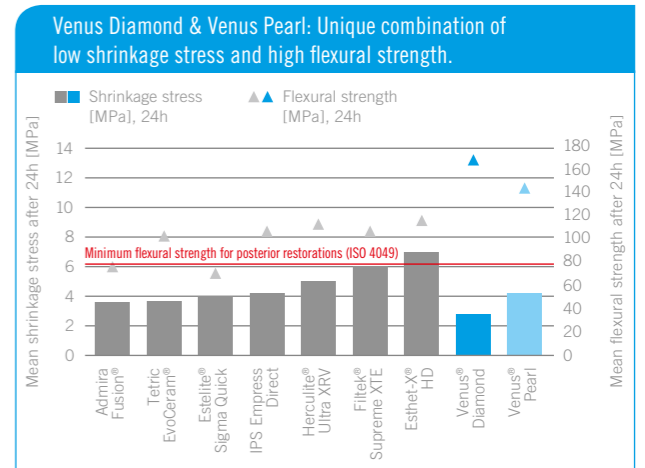
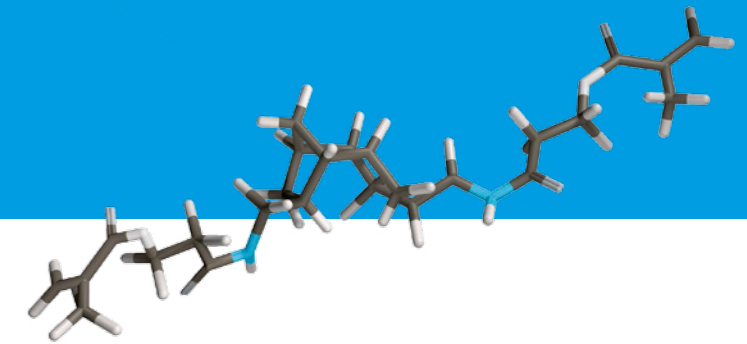
"The unique TCD-matrix is free of BPA related monomers."
Further information:
kulzer.com/tcd-matrix

LONG-LASTING RESTORATIONS THANKS TO THE UNIQUE TCD-MATRIX.

ONE Shade benefits from the unique combination of low shrinkage stress and high flexural strength of Venus Diamond and Venus Pearl which has been well-documented and tested in clinical studies.

Why is that remarkable?

- **Long-lasting restorations:** To overcome the limitations of traditional composites, Kulzer developed the TCD-matrix to resist chipping and fracture. We have over 10 years of clinical experience to prove it.
- **Assured biocompatibility:** Based on the TCD-matrix, Venus Diamond/Venus Pearl ONE Shade are entirely free of bis-GMA and BPA-related monomers.



Source: Kulzer R&D, Wehrheim

Admira Fusion® is a trademark of VOCO GmbH · Tetric EvoCeram® and IPS Empress Direct® are trademarks of Ivoclar Vivadent AG · Estelite® is a trademark of Tokuyama Dental Corporation Inc. · Herculite® is a trademark of Kerr Corporation · Filtek® is a trademark of 3M Company · Spectrum®, TPH® and x-flow® are trademarks of Dentsply DeTrey GmbH · Esthet-X® is a trademark of Dentsply Sirona Inc.

WANT TO TRY ONE?

kulzer.com/
try-one

We have already packed your ONE Shade kit for you. Order now and try it out for yourself.



Art Code	Package	Content
Venus Pearl ONE Shade		
66081836	Venus Pearl Syringe Refill ONE	1 x 3 g
66081837	Venus Pearl PLT Refill ONE	20 x 0.2 g
66081840	Venus Pearl ONE Kit – Syringe	2 x 3 g Syringes of Venus Pearl in shade ONE / 1 x 4 ml bottle of iBOND Universal
66081841	Venus Pearl ONE Kit – PLT	30 x 0.2 g PLT of Venus Pearl in shade ONE / 1 x 4 ml bottle of iBOND Universal
Venus Diamond ONE Shade		
66081838	Venus Diamond Syringe Refill ONE	1 x 4 g
66081839	Venus Diamond PLT Refill ONE	20 x 0.25 g
66081842	Venus Diamond ONE Kit – Syringe	2 x 4 g Syringes of Venus Diamond in shade ONE / 1 x 4 ml bottle of iBOND Universal
66081843	Venus Diamond ONE Kit – PLT	30 x 0.25 g PLT of Venus Diamond in shade ONE / 1 x 4 ml bottle of iBOND Universal

Contact in Germany

Kulzer GmbH
Leipziger Straße 2
63450 Hanau
Germany
info.dent@kulzer-dental.com

kulzer.com