

3M Science.
Applied to Life.™

Pink and powerful

3M™ Clinpro™ Sealant



Summary of advantages

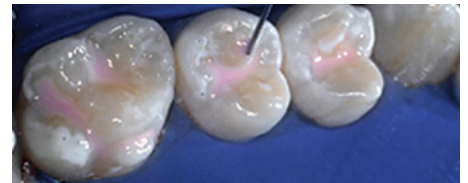
- Colour-change technology to visualise placement
- Convenient direct-delivery syringe for easy application
- Low viscosity to flow easily into pits and fissures
- Contains and releases fluoride*
- Bonds to enamel*

Protect and defend teeth against decay.

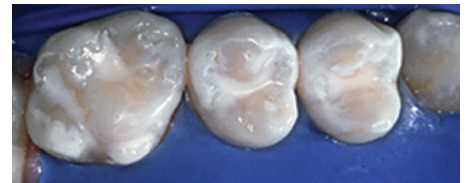
With its unique patented colour-change technology, 3M™ Clinpro™ Sealant makes sealant application easier than ever. This fluoride-releasing sealant goes on pink and cures to a natural white. Applied with our convenient ultra-fine syringe tip, its low-viscosity formula flows easily into pits and fissures, yet is viscous enough to stay in place during application. Clinpro sealant requires fewer occlusal adjustments than a filled sealant and provides powerful, long-lasting protection against caries.¹

Backed by over 15 years of clinical success, 3M are committed to providing the most advanced and patient-friendly solutions to dental professionals and their patients.

Before



After



Photography by Dr. Chris Bryant



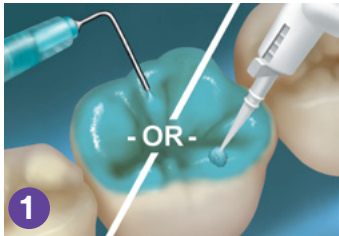
¹ The American Dental Association (ADA) and Caries Management by Risk Assessment (CAMBRA) recommend sealants as an aid to prevent caries.

Easy-to-use technique

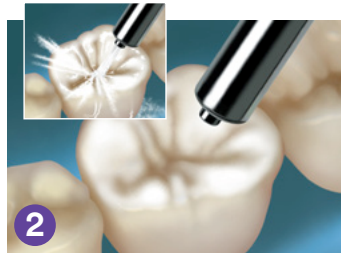
3M™ Clinpro™ Sealant offers colour-change technology for ultimate placement control.

Tooth preparation: Thoroughly clean teeth to remove plaque and debris from enamel surfaces and fissures. Rinse thoroughly with water and dry.

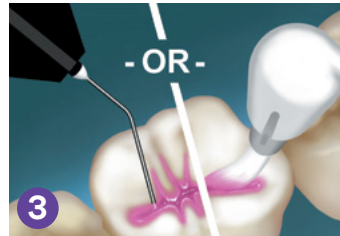
Note: Do not use any cleaning medium that contains oils or fluoride. Prepare adhesive according to dispensing instructions.



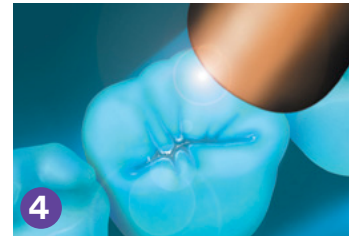
1 Apply etchant to all enamel surfaces to be sealed. (Note: 3M™ Adper™ Prompt™ Self-Etch Adhesive maybe used instead of the acid-etch technique when placing 3M™ Clinpro™ Sealant.)



2 Thoroughly rinse teeth to remove etchant, then dry the etched surfaces.



3 Apply 3M™ Clinpro™ Sealant into pits and fissures.



4 Light cure the sealant with a halogen, LED or plasma light for the amount of time specified to cure the sealant.



Ordering Information

Item #	Product Information
12626	3M™ Clinpro™ Sealant Introductory Kit—Syringes Kit includes: 2 – 1.2ml Clinpro Sealant syringes; 1 – 3ml Scotchbond™ Etchant syringe; 20 sealant syringe tips (Black); 25 etchant syringe tips (Blue)
12627	3M™ Clinpro™ Sealant Refill—Syringes Includes: 1 – 1.2ml Clinpro Sealant syringe; 10 sealant syringe tips (Black)
12621	3M™ Clinpro™ Sealant Introductory Kit—Bottles Kit includes: 2 – 6ml Clinpro Sealant bottles; 1 – 9ml Scotchbond™ Etchant bottle; 2 brush handles; 60 brush tips; 50 fiber tips; 1 mixing well with cover
12622	3M™ Clinpro™ Sealant Refill—Bottle Includes: 1 – 6ml Clinpro Sealant bottle
12626TP	3M™ Clinpro™ Sealant and Adper™ Prompt™ Trial Kit Kit includes: 1 – 1.2ml Clinpro Sealant syringe; 10 sealant syringe tips (Black); 20 Adper™ Prompt™ L-Pop™ Applicators*

*3M internal data

www.3M.co.uk/Dental

3M

3M Oral Care
3M United Kingdom PLC
Charnwood Campus
10 Bakewell Road
Loughborough
Leicestershire, LE11 5RB
+0800 626 578

3M Ireland Ltd
The Iveagh Building
Carrickmines Park
Carrickmines Dublin 18
Ireland

+353 1 280 3555

☎ 08705 360036

✉ OralCareUK@mmm.com

📱 @3MOralCareUK

3M, Clinpro, Adper, L-Pop, Prompt and Scotchbond are trademarks of 3M company.
© 3M 2021. All rights reserved.